

Sightreading Exam

11



12



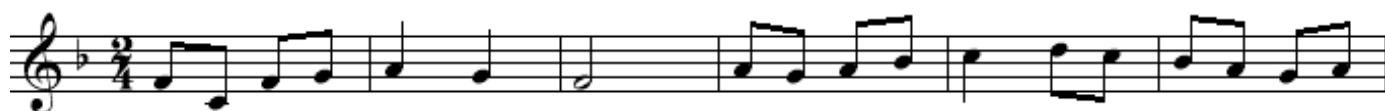
13



14



15



16



17



18



19



20



21

Exercise 21 is written in treble clef, 3/4 time, with a key signature of two flats (B-flat and E-flat). The first staff contains a sequence of notes: C4, D4, E4, F4, G4, A4, B4, C5, B4, A4, G4, F4, E4, D4, C4. The second staff begins with a finger number '5' above the first note (C4) and continues with: C4, D4, E4, F4, G4, A4, B4, C5, B4, A4, G4, F4, E4, D4, C4.

22

Exercise 22 is written in treble clef, 4/4 time, with a key signature of two flats (B-flat and E-flat). The first staff contains a sequence of notes: C4, D4, E4, F4, G4, A4, B4, C5, B4, A4, G4, F4, E4, D4, C4. The second staff begins with a finger number '5' above the first note (C4) and continues with: C4, D4, E4, F4, G4, A4, B4, C5, B4, A4, G4, F4, E4, D4, C4.

23

Exercise 23 is written in treble clef, 3/4 time, with a key signature of three sharps (F#, C#, G#). The first staff contains a sequence of notes: C4, D4, E4, F4, G4, A4, B4, C5, B4, A4, G4, F4, E4, D4, C4. The second staff begins with a finger number '5' above the first note (C4) and continues with: C4, D4, E4, F4, G4, A4, B4, C5, B4, A4, G4, F4, E4, D4, C4.

24

Exercise 24 is written in treble clef, 4/4 time, with a key signature of one sharp (F#). The first staff contains a sequence of notes: C4, D4, E4, F4, G4, A4, B4, C5, B4, A4, G4, F4, E4, D4, C4. The second staff begins with a finger number '4' above the first note (C4) and continues with: C4, D4, E4, F4, G4, A4, B4, C5, B4, A4, G4, F4, E4, D4, C4.

25

Exercise 25 is written in treble clef, 3/4 time, with a key signature of three sharps (F#, C#, G#). The first staff contains a sequence of notes: C4, D4, E4, F4, G4, A4, B4, C5, B4, A4, G4, F4, E4, D4, C4. The second staff begins with a finger number '4' above the first note (C4) and continues with: C4, D4, E4, F4, G4, A4, B4, C5, B4, A4, G4, F4, E4, D4, C4. The second staff also features accents (>) over the notes G4 and A4 in the second measure.

26

Exercise 26 is written in G major (one sharp) and 3/4 time. The first staff contains a melodic line starting with a dotted quarter note G4, followed by eighth notes A4, B4, C5, B4, A4, G4, and a quarter note F#4. The second staff starts with a finger number '5' above the first note, G4, and continues with eighth notes A4, B4, C5, B4, A4, G4, and a quarter note F#4, ending with a double bar line.

27

Exercise 27 is written in B-flat major (two flats) and 3/4 time. The first staff contains a melodic line starting with a quarter note Bb4, followed by eighth notes C5, D5, Eb5, D5, C5, Bb4, and a quarter note Ab4. The second staff starts with a finger number '6' above the first note, Bb4, and continues with eighth notes C5, D5, Eb5, D5, C5, Bb4, and a quarter note Ab4, ending with a double bar line.

28

Exercise 28 is written in B-flat major (two flats) and 3/4 time. The first staff contains a melodic line starting with a quarter note Bb4, followed by eighth notes C5, D5, Eb5, D5, C5, Bb4, and a quarter note Ab4. The second staff starts with a finger number '6' above the first note, Bb4, and continues with eighth notes C5, D5, Eb5, D5, C5, Bb4, and a quarter note Ab4, ending with a double bar line.

29

Exercise 29 is written in B-flat major (two flats) and 4/4 time. The first staff contains a melodic line starting with a quarter note Bb4, followed by quarter notes C5, D5, Eb5, D5, C5, Bb4, and a quarter note Ab4. The second staff starts with a finger number '6' above the first note, Bb4, and continues with quarter notes C5, D5, Eb5, D5, C5, Bb4, and a quarter note Ab4, ending with a double bar line.

30

Exercise 30 is written in B-flat major (two flats) and 3/4 time. The first staff contains a melodic line starting with a quarter note Bb4, followed by eighth notes C5, D5, Eb5, D5, C5, Bb4, and a quarter note Ab4. The second staff starts with a finger number '5' above the first note, Bb4, and continues with eighth notes C5, D5, Eb5, D5, C5, Bb4, and a quarter note Ab4, ending with a double bar line.