

Sightreading Exam

11



12



13



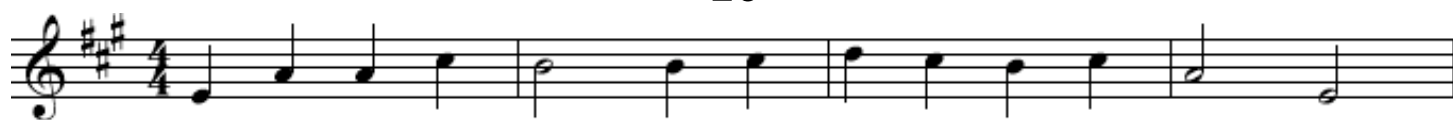
14



15



16



17



18



19



20



21

Exercise 21 consists of two staves of music in 3/4 time with a key signature of two flats (B-flat and E-flat). The first staff contains a sequence of notes: C4, D4, E4, F4, G4, A4, B4, A4, G4, F4, E4, D4, C4. The second staff begins with a fingering '5' and contains notes: C4, D4, E4, F4, G4, A4, B4, A4, G4, F4, E4, D4, C4.

22

Exercise 22 consists of two staves of music in 4/4 time with a key signature of two flats (B-flat and E-flat). The first staff contains notes: C4, D4, E4, F4, G4, A4, B4, A4, G4, F4, E4, D4, C4. The second staff begins with a fingering '5' and contains notes: C4, D4, E4, F4, G4, A4, B4, A4, G4, F4, E4, D4, C4.

23

Exercise 23 consists of two staves of music in 3/4 time with a key signature of three sharps (F#, C#, G#). The first staff contains notes: C4, D4, E4, F4, G4, A4, B4, A4, G4, F4, E4, D4, C4. The second staff begins with a fingering '5' and contains notes: C4, D4, E4, F4, G4, A4, B4, A4, G4, F4, E4, D4, C4.

24

Exercise 24 consists of two staves of music in 4/4 time with a key signature of one sharp (F#). The first staff contains notes: C4, D4, E4, F4, G4, A4, B4, A4, G4, F4, E4, D4, C4. The second staff begins with a fingering '4' and contains notes: C4, D4, E4, F4, G4, A4, B4, A4, G4, F4, E4, D4, C4.

25

Exercise 25 consists of two staves of music in 3/4 time with a key signature of three sharps (F#, C#, G#). The first staff contains notes: C4, D4, E4, F4, G4, A4, B4, A4, G4, F4, E4, D4, C4. The second staff begins with a fingering '4' and contains notes: C4, D4, E4, F4, G4, A4, B4, A4, G4, F4, E4, D4, C4, with accents (>) over the notes G4 and B4.

26

Exercise 26 consists of two staves of music in G major and 3/4 time. The first staff contains measures 1 through 4, and the second staff contains measures 5 through 8. The melody is written in treble clef and features a mix of quarter, eighth, and dotted notes.

27

Exercise 27 consists of two staves of music in B-flat major and 3/4 time. The first staff contains measures 1 through 4, and the second staff contains measures 5 through 6. The melody is written in treble clef and includes eighth and quarter notes.

28

Exercise 28 consists of two staves of music in B-flat major and 3/4 time. The first staff contains measures 1 through 4, and the second staff contains measures 5 through 6. The melody is written in treble clef and features a variety of note values including quarter and eighth notes.

29

Exercise 29 consists of two staves of music in B-flat major and 4/4 time. The first staff contains measures 1 through 4, and the second staff contains measures 5 through 6. The melody is written in treble clef and primarily uses quarter and eighth notes.

30

Exercise 30 consists of two staves of music in B-flat major and 3/4 time. The first staff contains measures 1 through 4, and the second staff contains measures 5 through 8. The melody is written in treble clef and includes quarter, eighth, and dotted notes.